

EAPS WEEKLY NEWSLETTER

27 April 2020

Contents:

Meetings/Events & Dept. News.....	2
Undergrad/Graduate Student News.....	3
University News.....	9

BE SURE TO CHECK OUT ALL OF THE EAPS
COMMUNICATIONS MEDIA!

[Facebook](#)

[Twitter](#)

[LinkedIn](#)

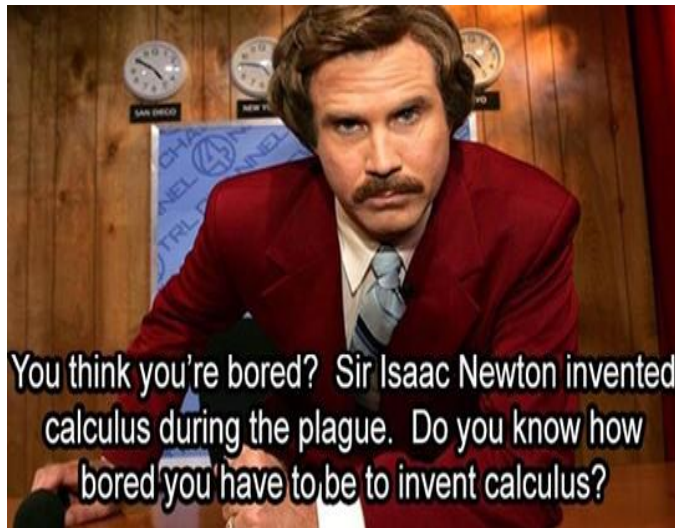
[Instagram](#)

[Department Magazine](#)

[Website News](#)



HOPE YOU SMILE



Earth
Atmospheric
Planetary
Sciences

EAPS MEETINGS & EVENTS

EAPS FACULTY MEETINGS

Tuesday's 3:00 PM

HAMP 2244

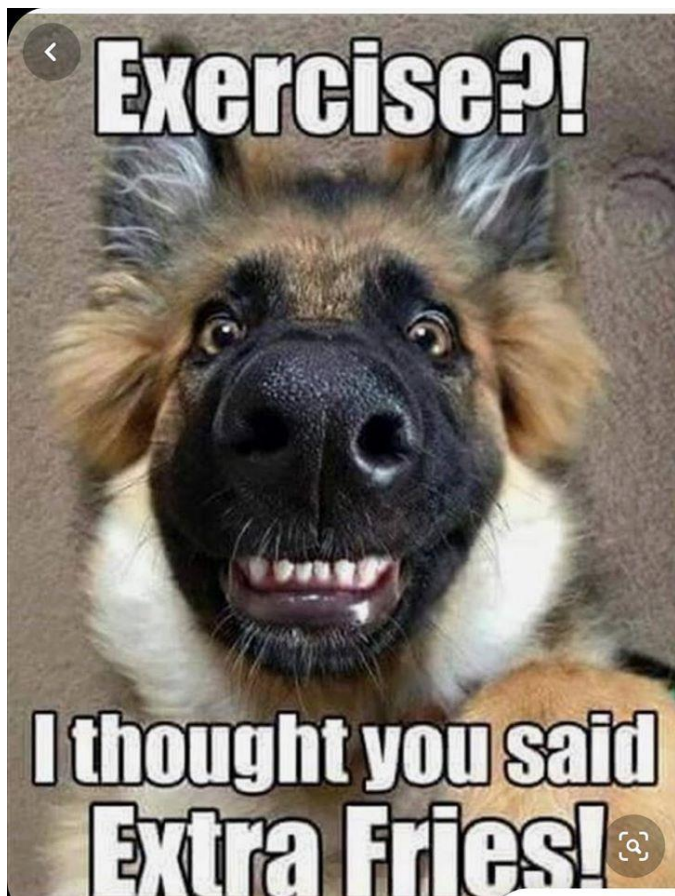
May 5

EAPS K-12 OUTREACH CALENDAR OF EVENTS

http://www.eaps.purdue.edu/outreach/Outreach_News.html

REPORT YOUR OUTREACH AND ENGAGEMENT ACTIVITIES

<http://bit.ly/EAPSOOut>



ScienceHelp@purdue.edu when you need any kind of help instead of contacting us directly. That will cover web, Linux, Mac and Windows related issues. It also works for printer problems too but currently no one is servicing those.

Thank you all and when things return to normal please stop by the IT office and say "Hi!"; although, emailing ScienceHelp will still work for issues then and our bosses will still appreciate it. Please stay healthy along with your families and friends.

EAPS FRONT OFFICE

Please know that EAPS is always here for our students. We want everyone to be safe and healthy. Remember to practice social distancing.

Contact your instructors should you have a question concerning your classes and your advisor should you have other academic concerns.

To reach the EAPS front office staff, please email Kathy Kincade (kkincade@purdue.edu) or Katherine Huseman (khuseman@purdue.edu). The office phones are also being monitored and you are welcome to call 765-494-3258. The business office can be reached at eapsbo@purdue.edu.

OUTREACH NEWS

If you know an educator, let them know we have made and have been updating the College of Science's e-learning page. We have created worksheets to go along with many of our Superheroes of Science podcasts, put together a list of online resources (arranged by content), created Virtual Tours, and posted videos of various content demos. These resources are being updated regularly! <http://bit.ly/PUElearning>

Speaking of resources, we have been working to create virtual tours of the departmental wall wraps and other campus resources. Check out the current draft of the Gold Mine display: <https://bit.ly/EAPSGold>

The Purdue University Superheroes of Science Podcast is on most podcast players as well as YouTube! Check out some of the latest episodes



DEPARTMENT NEWS

MS DEFENSE

W. Logan Downing

May 11, 2020
2:00pm

Using Probe Data Analytics for Characterizing Speed Reductions as well as Predicting Speeds During Rain Events

Advisor: Wen-wen Tung

COMPUTER ISSUES

As everyone is aware no one is in the office to help these days and it seems like our supervisors want to know we are actually doing things remotely ;-) so to that end when you have any computer related issues please email

<http://www.eaps.purdue.edu/>

Page 2 of 10

including interviews with Jeffery Lucas, Christopher Roemmele, Jani Sparks, and Birgit Kaufmann. EAPS K-12 Outreach is on Twitter (@Purdue SOS), YouTube (Superheroes of Science), Facebook (EAPS.out), Pinterest, and most podcast players as Purdue Superheroes of Science.



LEARNING REMOTELY OVERVIEW

Students, starting March 23, all teaching and learning is happening online through the end of spring semester. Your instructors worked over spring break to make changes that allow remote course completion, and will contact you about course-specific alterations.

[Read Quick Start First](#)

In the meantime, begin with the newly created Learning Remotely Quick Start. This guide is a checklist to help Purdue students jump-start into remote learning. It also includes hyperlinks to Purdue services being offered remotely, and connects to a lists of free wifi hotspots and Internet resources. There is even a sample schedule that you can use to organize your time.

Please bookmark this Learning Remotely webpage, which curates and prioritizes other resources to help you prepare to continue learning in an online environment. The page is updated frequently and new material will be identified.

On this page:

1. What can I expect?
2. How do I learn online?
3. How do I communicate in online classes?
4. How do I work collaboratively with my peers?
5. What accommodations are available?
6. Is there additional software support?
7. What additional student support is available?

For complete information, please visit:

<https://www.purdue.edu/innovativelearning/learning-remotely/#h07>

CLIMATE AND EXTREME WEATHER OPPORTUNITIES

Central Michigan University is currently seeking two Ph.D. students to pursue an opportunity at the climate/weather extreme interface at the Department of Earth and Atmospheric Sciences. These positions are supported by two grant funded four-year research assistantships as part of a project to further our understanding the processes that lead to severe convection around the globe and the links of these phenomena to a changing climate.

This project is all about the connection of scales, and working with large reanalysis and climate model datasets to explore favorable environmental conditions and our ability to resolve these environments. This position would suit students with either an interest in the impacts of climate change on extremes, or a more fundamental interest into the links between processes that lead to favorable severe storm environments and larger scales. In either direction, an interest in statistics and large datasets is a plus.

Start date for the position is flexible, with a start anywhere between Fall 2020 and 2021. Ideally, the applicants would have an M.S. in meteorology, atmospheric sciences, environmental data science or climate science, but I would also consider exceptional bachelors level applicants.

If you would like more information or know of interested parties please feel free to send an email to me, John T. Allen (allen4jt@cmich.edu). Details about our group at CMU can be found at the following link:

http://people.cst.cmich.edu/allen4jt/allen_home_page.html

WELL-BEING RESOURCES FOR GRAD STUDENTS AND POSTDOCS

Many of us are stressed out by all that is going on, which is understandable. Attached is an interactive pdf with resources for supporting grad student and postdoc wellbeing. Thanks to @AirealeJoi, @Lauren_Irwin22, and @RomanLiera

for their work creating this resource.
pullias.usc.edu/wp-content/upl...

[Please see attached flier for complete information]

**CIMMS POST-DOCTORAL RESEARCH
ASSOCIATE – VORTEX-SE**

The Cooperative Institute for Mesoscale Meteorological Studies (CIMMS) at The University of Oklahoma (OU) is currently looking for a Post-doctoral Research Associate to work with the National Severe Storms Laboratory (NSSL). This position will work at NSSL in Norman, OK, which is located within the National Weather Center (NWC), a highly collaborative operational, research, and academic environment containing a number of NOAA and OU organizations. Here, you will work in an exciting environment focused on the development of operationally relevant severe weather warning applications and techniques and have opportunities to interact with NOAA scientists, NWS forecasters and academic scientists within both the NWC and the broader meteorological community.

As a CIMMS Postdoctoral Research Associate working with NSSL, you will provide scientific and meteorological expertise, along with technical support, for the coordination of VORTEX-SE, a Congressionally mandated program of research intended to reduce the impact of tornadoes in the Southeast U.S. The list below describes potential projects:

- 1. Produce mission and case descriptions of VORTEX-SE data sets to enable more effective community research;
- 2. Participate in monitoring VORTEX-SE research and summarize findings in the Community Forum;
- 3. Participate in the planning and coordination of observing campaigns;
- 4. Interact with the operational community to assess information and knowledge needs, and transfer new information and knowledge;
- 5. Conduct research to fill gaps not being addressed through VORTEX-SE grant solicitations.

The minimum qualifications for the position are:
1) A Doctorate Degree in Meteorology, Atmospheric Science, or related area.

When applying, please indicate your experience in Southeast U.S. tornadic storms studies. Also describe your past and ongoing interactions with the operational meteorology community in the Southeast U.S.

[For complete information, please see attached flier]

**CIMMS POST-DOCTORAL RESEARCH
ASSOCIATE - APPLICATIONS OF UNPILOTED
AERIAL SYSTEMS (UAS) IN
CHARACTERIZING HIGH WIND DAMAGE**

The Cooperative Institute for Mesoscale Meteorological Studies (CIMMS) at The University of Oklahoma (OU) working collaboratively with NOAA's National Severe Storms Laboratory (NSSL), is currently looking for a highly-qualified Post-Doctoral Research Associate to provide scientific and technological expertise in the use of Unpiloted Aerial Systems (UAS) to characterize high wind damage from convective storms. The Post-Doc will provide leadership in the procurement, development, and application of UAS for use in research applications at CIMMS/NSSL, primarily for the use of performing damage surveys to better understand severe convective storms, but collaboration with National Weather Service Forecast Offices and local emergency management for use in operations is encouraged. The position will require close collaboration with the NOAA UAS program office to ensure all FAA and other agency requirements are being followed. Furthermore, the position will require working with agricultural extension agents, and local and state forest services as appropriate. This position will include participation in the field for upcoming research projects and will require the Post-Doc to integrate UAS, and remote-sensing capabilities derived from visible and multi-spectral imagery for surveying damage, into these field programs. The incumbent will work directly with research scientists at NSSL and will be encouraged to collaborate actively with scientists from other institutions with expertise in UAS (e.g. the OU Center for Autonomous Sensing and Sampling). The position will be based at NSSL in Norman, OK within the National Weather Center (NWC), a highly collaborative forecasting,

research, and academic environment containing a number of NOAA and OU organizations.

[See attached flier for additional information]

CIMMS RESEARCH FELLOW – WEATHER AND TRANSPORTATION APPLICATIONS

The Cooperative Institute for Mesoscale Meteorological Studies (CIMMS) at the University of Oklahoma and the National Severe Storms Laboratory (NSSL) is currently seeking a fixed-term (12-24 months) Research Fellow starting in Summer 2020 to assist with the development of impacts-based decision support tools as a part of the Transportation Applications Team. This team works collaboratively with the National Weather Service (NWS) and the Federal Aviation Administration (FAA) to develop the next generation of products and tools for use within operations, with particular focus on decision support for transportation-related warnings/advisories (e.g., blizzards, aircraft hail encounters, icing, etc.).

The duties of this position will be to: 1. Work collaboratively with the NWS and FAA to develop decision-support tools for use in operations; 2. Assist with quality control and evaluation of observations within the Multi-Radar/Multi-Sensor (MRMS) system (<http://mrms.nssl.noaa.gov>). The minimum qualifications for the position are:

1. A Bachelor's Degree in Meteorology, Geography, Civil Engineering, or another related area;
2. Experience in programming (C++, Python, Fortran);
3. Experience with visualization of meteorological datasets.

Please identify experience with programming and meteorological datasets in your cover letter.

Supervision will be provided by CIMMS staff. The incumbent is not expected to supervise other employees. Salary for this position is \$40,000. Standard insurance benefits are included (more information may be found at <http://www.hr.ou.edu>). The incumbent would ideally start in Summer 2020, but the starting date is negotiable.

To apply for the position, please forward your resume, cover letter and list of three references to:

CIMMS Careers
University of Oklahoma

120 David L. Boren Blvd., Suite 2100
Norman, OK 73072-7304
CIMMS-careers@ou.edu
ATTN: Transportation Applications

[See attached flier]

DOE PROGRAM CREATES OPPORTUNITIES FOR GRADUATE STUDENTS

Applications now being accepted for 2020 Solicitation 1

Since its inception in 2014, the [U.S. Department of Energy \(DOE\) Office of Science Graduate Student Research \(SCGSR\) program](#) has helped prepare graduate students for science, technology, engineering, or mathematics (STEM) careers.

The SCGSR program provides supplemental awards to outstanding U.S. graduate students to pursue part of their graduate thesis research at a DOE laboratory/facility in areas that address scientific challenges central to the Office of Science mission. This research opportunity is expected to advance the graduate students' overall doctoral thesis while providing access to the expertise, resources, and capabilities available at the DOE laboratories/facilities. The SCGSR program is now accepting applications for the 2020 Solicitation 1. **Applications are due by 5 p.m. Eastern time Wednesday, May 6, 2020.**

Detailed information about the program, including eligibility requirements and access to the online application system, can be found at <https://science.osti.gov/wdts/scgsr/>

RESEARCH ASSOCIATE – HAZARDOUS WEATHER TESTBED

The Cooperative Institute for Mesoscale Meteorological Studies (CIMMS) at the University

of Oklahoma currently is seeking a research associate to collaborate with scientists in the National Severe Storms Laboratory's (NSSL) Warning Research & Development Division on the implementation of severe weather applications to support research to operations initiative via transition into the National Weather Service's Advanced Weather Interactive Processing System- 2nd generation (AWIPS2) operational software platform. The position is located in Norman, Oklahoma.

The duties of this position are:

1. Integration of NSSL's experimental datasets into AWIPS2;
2. Development of new applications and visualization techniques in the AWIPS2 environment and platform;
3. Support and participate in applied research and development and operational experiments in the Hazardous Weather Testbed;
4. Acquire and apply expertise about severe local storms in the warning decision-making process.

[For complete information please see flier]

CIMMS RESEARCH ASSOCIATE – SCIENTIFIC PROGRAMMER FOR DEVELOPING GRAPHICAL FORECAST EDITOR TRAINING IN AWIPS

The Cooperative Institute for Mesoscale Meteorological Studies (CIMMS) at the University of Oklahoma (OU) seeks to fill a Research Associate position to support the National Oceanic and Atmospheric Administration (NOAA) Forecast Decision Training Division (FDTD) in Boulder, Colorado, on training for the Advanced Weather Interactive Processing System (AWIPS) Graphical Forecast Editor (GFE).

The principal duties of this position are:

- Development of training and online reference material for new and existing AWIPS GFE Focal Points at NWS Weather Forecast Offices and National Centers
- Analysis of current and future versions of the GFE software, including local settings and implementation at various NWS weather forecast offices, in order to identify operational best practices.

[See flier for additional information]

FED PBL MODELER AT NSSL

NSSL is hiring a Federal scientists with expertise in PBL parameterization on aspects associated with convective scale prediction. If interested, please see:

Job Announcement # (MAP): OAR-NSSL-2020-0010

- <https://www.usajobs.gov/GetJob/ViewDetails/560575900>

NSSL has posted a Meteorologist, ZP3 or ZP4 with full promotion potential to the ZP4, position within FRDD. These announcements close on 3/10/2020

Job Announcement # (DE): OAR-NSSL-2020-0011

- <https://www.usajobs.gov/GetJob/ViewDetails/560576000>

TENURE TRACK OPPORTUNITY – UNIVERSITY AT ALBANY-SUNY

The Atmospheric Sciences Research Center (ASRC) of the University at Albany, State University of New York, invites applicants seeks to hire a tenure-track Professor of Empire Innovation (rank open), effective Fall 2020. This New York State supported college-year appointment allows for supplementary summer salary from external research funding. We currently seek to fill this position, with an emphasis on the area of High-Resolution Atmospheric Modeling. The ideal candidate will have expertise in meteorological as well as air quality and photochemical modeling, be interested in urban environments and land-sea interaction, be fluent in modern computational methods including data assimilation approaches, and have a firm understanding boundary-layer meteorology. ASRC has a tradition innovation in research, joy in discovery, and enthusiasm for working with colleagues in different disciplines. ASRC also values collaboration with researchers from diverse backgrounds who bring fresh perspectives. The successful candidate will be expected to pursue and secure funding to support a robust research program, publish in relevant academic fields, and lead efforts that support the planned continuing investment in this area of SUNY strength and focus. Priority will be

given to candidates willing to engage in cross-disciplinary collaboration, especially with the University's Public Health program in environmental epidemiology and community health management (e.g., modeling of particulate matter and reactive gases). Outstanding candidates from other areas of Atmospheric Science will also be considered and are encouraged to apply.

Follow link for additional information:

https://www.albany.edu/asrc/job_opportunities.php

OPENING FOR A NUMERICAL WEATHER PREDICTION (NWP)

DTN has an opening for a Numerical Weather Prediction (NWP) Scientist in its Norman, OK, office. The successful candidate will assist with supporting and enhancing DTN's WRF-based NWP capabilities. Key tasks involve applying WRF data assimilation techniques and developing relevant applications while working in an AWS high-performance computing (HPC) environment.

https://dtm.wd1.myworkdayjobs.com/en-US/DTN_Careers/job/Norman-OK/Numerical-Weather-Prediction--NWP--Scientist_R-000024

MOBILE iOS APPLICATION DEVELOPER POSITION

DTN currently has a Mobile iOS Application Developer opening for an individual with a passion for learning and solving challenging problems

https://dtm.wd1.myworkdayjobs.com/en-US/DTN_Careers/job/Norman-OK/Mobile-iOS-Application-Developer_R-000057

METEOROLOGICAL DATA SCIENTIST POSITION

DTN is looking for a Meteorological Data Scientist to join our team!

https://dtm.wd1.myworkdayjobs.com/en-US/DTN_Careers/job/Norman-OK/Data-Scientist_R-000031

CIMMS POST-DOCTORAL RESEARCH ASSOCIATE – SEVERE WEATHER

The Cooperative Institute for Mesoscale Meteorological Studies (CIMMS) at The University of Oklahoma (OU) is currently looking for a Post-doctoral Research Associate to work with the National Severe Storms Laboratory (NSSL). This position will work at NSSL in Norman, OK, which is located within the National Weather Center (NWC), a highly collaborative operational, research, and academic environment containing a number of NOAA and OU organizations. Here, you will work in an exciting environment focused on the development of operationally relevant severe weather warning applications and techniques and have opportunities to interact with NOAA scientists, NWS forecasters and academic scientists within both the NWC and the broader meteorological community. As a CIMMS Postdoctoral Research Associate working with NSSL, you will provide scientific and meteorological expertise, along with technical support, for the development of severe convective weather applications for the prediction (0-60 minute time scale) and detection of hazards such as tornadoes, damaging wind, large hail, and lightning. This position is heavily oriented in applied research, and the list below describes potential projects:

1. Develop and/or improve calibrated Probabilistic Hazard Information for the prediction of severe weather hazards;
2. Develop, test, and implement new severe weather warning guidance algorithms for use in the Multi-Radar Multi-Sensor (MRMS) system and on the WSR-88D radar network;
3. Develop machine learning techniques for use in severe weather data analysis and short term nowcasting of tornadoes, hail, damaging wind and lightning;
4. Improve lightning forecasts and applications of lightning data in operational use.

The minimum qualifications for the position are:

- 1) A Doctorate Degree in Meteorology, Atmospheric Science, or related area.

When applying, please indicate your preference(s) as to which project areas in which you are interested. Additionally, please include information related to your experience in software development, web development, graphic design/visualization, and Linux (UNIX) environments including the AWIPS2/N-AWIPS systems. Your ability to communicate clearly is of utmost importance.

Normal working hours will be observed except for occasional irregular hours during data collection, warning/forecast experiments, or workshops

conducted at remote locations. General supervision will be provided by CIMMS staff with technical oversight provided by NSSL and CIMMS management. You will work under general supervision but are expected to work independently and determine action to be taken in handling all but unusual situations. This is a non-supervisory position. Salary is based on your education, experience, skills, and knowledge.

Information on University of Oklahoma benefits may be found at <https://hr.ou.edu>.

To apply for the position, please send your CV, cover letter, and list of three references to:

CIMMS Careers
University of Oklahoma CIMMS
120 David L. Boren Blvd., Suite 2100
Norman, OK 73072-7304
CIMMS-careers@ou.edu
Job Requisition: Severe Weather Post-Doc

CIMMS RESEARCH SCIENTIST – SEVERE WEATHER RESEARCH SCIENTIST

The Cooperative Institute for Mesoscale Meteorological Studies (CIMMS) at The University of Oklahoma (OU) is currently looking for a Research Scientist to work with the National Severe Storms Laboratory (NSSL). These positions will work at NSSL in Norman, OK, which is located within the National Weather Center (NWC), a highly collaborative operational, research, and academic environment containing a number of NOAA and OU organizations. Here, you will work in an exciting environment focused on the development of operationally relevant severe

weather warning applications and techniques and have opportunities to interact with NOAA scientists, National Weather Service forecasters and academic scientists within both the NWC and the broader meteorological community.

- As a CIMMS Research Scientist working with NSSL, you will provide scientific and meteorological expertise, along with technical support, for the development of severe convective weather applications for the prediction (0-60 minute time scale) and detection of hazards such as tornadoes, damaging wind, large hail, and lightning. This position is heavily oriented towards the Research-to-Operations process, and the list below describes potential projects:
1. Develop and/or improve calibrated Probabilistic Hazard Information for the prediction of severe weather hazards;
 2. Develop, test, and implement new severe weather warning guidance algorithms for use in the Multi-Radar Multi-Sensor (MRMS) system and on the WSR-88D radar network;
 3. Develop machine learning techniques for use in severe weather data analysis and short term nowcasting of tornadoes, hail, damaging wind and lightning;
 4. Improve lightning forecasts and applications of lightning data in operational use.

The minimum qualifications for the position are:

1) A Doctorate Degree in Meteorology, Atmospheric Science, or related area;

When applying, please indicate your preference(s) as to which project areas in which you are interested. Additionally, please include information related to your experience in software development, web development, graphic design/visualization, and Linux (UNIX) environments including the AWIPS2/N-AWIPS systems. Your ability to communicate clearly is of utmost importance. Please indicate any experience with writing proposals and managing projects as well.

Normal working hours will be observed except for occasional irregular hours during data collection, warning/forecast experiments, or workshops

conducted at remote locations. General supervision will be provided by CIMMS staff with technical oversight provided by NSSL and CIMMS management. You will work under general supervision but are expected to work independently and determine action to be taken in handling all but unusual situations. This is a non-supervisory position, although you may serve as a leader of technical teams. Salary is based on your education, experience, skills, and knowledge. Information on University of Oklahoma benefits may be found at <https://hr.ou.edu>. To apply for the position, please send your CV, cover letter, and list of three references to:

CIMMS Careers
University of Oklahoma CIMMS
120 David L. Boren Blvd., Suite 2100
Norman, OK 73072-7304
CIMMS-careers@ou.edu
Job Requisition: Severe Weather RS

FRENCH CULTURE, FOOD, & HEALTH

May 23-31, 2020
Roanne, France
NUTR 39800

[See attached flier for additional information]

DTN IS HIRNG AN NWP SCIENTIST

DTN is hiring a WRF/NWP scientist at their Norman, OK, location. This would be a great opportunity for a recent MS or PhD graduate, particularly someone with strong cloud computing or data assimilation experience. We also have an opening for a supporting AWS Cloud Engineer. Thanks.

https://dtn.wd1.myworkdayjobs.com/en-US/DTN_Careers/job/Norman-OK/Numerical-Weather-Prediction--NWP--Scientist_R-000024

WORKING PAPER SERIES – FALL 2020 ISSUE **CALL FOR ABSTRACTS**

The Susan Bulkeley Butler Center for Leadership Excellence, in partnership with ADVANCE-Center for Faculty Success, is continuing the Working Paper Series focusing on navigating careers in the academy. This peer reviewed series includes work by senior scholars, graduate students, and faculty at all stages as a space for the discussion of issues related to academic careers. The series will serve as a means for documenting and sharing interventions and/or practices and/or processes developed by and/or utilized by faculty and post-docs for navigating careers.

The call for abstracts for the fall 2020 issue is now open - nationally and globally. Complete details are in the attached pdf, as well as on the Working Paper Series [website](#).

Abstracts must be 150 words or less and must be submitted via email to butler-advance@purdue.edu by **Friday, August 21, 2020**.

Any abstracts sent early in the spring semester may receive a response by the end of the spring semester. Abstracts received by the deadline of Friday, August 21st will receive a reply early in the fall semester.

[See attached flier for more information]

IMPORTANT NOTICE ABOUT THIS NEWSLETTER

This newsletter is used as the primary information source for current and upcoming events, announcements, awards, grant opportunities, and other happenings in our department and around campus. Active links to additional information will be provided as needed. Individual email announcements will no longer be sent unless the content is time-sensitive. We will continue to include our publications, presentations and other recent news items as well.

Those using paper copies of the newsletter should go to our newsletter archive on the EAPS website at <http://www.eaps.purdue.edu/news/newsletters.html> and Click on News to access active links as needed. Material for inclusion in the newsletter should be submitted to Katherine Huseman (khuseman@purdue.edu) **by 5:00pm on Thursday of each week for inclusion in the Monday issue.**

If it is in the newsletter, we assume you know about it and no other reminders are needed. For answers to common technology questions and the latest updates from the EAPS Technology Support staff, please visit: http://www.eaps.purdue.edu/resources/information_technology/index.htm.

Also, as an additional resource for information about departmental events, seminars, etc., see our departmental calendar at <http://www.EAPS.purdue.edu/events-calendar.html>



CIMMS Post-Doctoral Research Associate – VORTEX-SE

The Cooperative Institute for Mesoscale Meteorological Studies (CIMMS) at The University of Oklahoma (OU) is currently looking for a Post-doctoral Research Associate to work with the National Severe Storms Laboratory (NSSL). This position will work at NSSL in Norman, OK, which is located within the National Weather Center (NWC), a highly collaborative operational, research, and academic environment containing a number of NOAA and OU organizations. Here, you will work in an exciting environment focused on the development of operationally relevant severe weather warning applications and techniques and have opportunities to interact with NOAA scientists, NWS forecasters and academic scientists within both the NWC and the broader meteorological community.

As a CIMMS Postdoctoral Research Associate working with NSSL, you will provide scientific and meteorological expertise, along with technical support, for the coordination of VORTEX-SE, a Congressionally mandated program of research intended to reduce the impact of tornadoes in the Southeast U.S. The list below describes potential projects:

1. Produce mission and case descriptions of VORTEX-SE data sets to enable more effective community research;
2. Participate in monitoring VORTEX-SE research and summarize findings in the Community Forum;
3. Participate in the planning and coordination of observing campaigns;
4. Interact with the operational community to assess information and knowledge needs, and transfer new information and knowledge;
5. Conduct research to fill gaps not being addressed through VORTEX-SE grant solicitations.

The minimum qualifications for the position are:

- 1) A Doctorate Degree in Meteorology, Atmospheric Science, or related area.

When applying, please indicate your experience in Southeast U.S. tornadic storms studies. Also describe your past and ongoing interactions with the operational meteorology community in the Southeast U.S.

Normal working hours will be observed except for occasional irregular hours during data collection, warning/forecast experiments, or workshops conducted at remote locations. General supervision will be provided by CIMMS staff with technical oversight provided by NSSL and CIMMS management. You will work under general supervision but are expected to work independently and determine action to be taken in handling all but unusual situations. This is a non-supervisory position. Salary is based on your education, experience, skills, and knowledge. Information on University of Oklahoma benefits may be found at <https://hr.ou.edu>.

To apply for the position, please send your CV, cover letter, and list of three references to:

CIMMS Careers
University of Oklahoma CIMMS
120 David L. Boren Blvd., Suite 2100
Norman, OK 73072-7304
CIMMS-careers@ou.edu
Job Requisition: VORTEX-SE Post-Doc

The University of Oklahoma is an equal opportunity/Affirmative Action employer.

1

MENTAL HEALTH & WELLNESS

- [Talkspace](#)
- [Very Well Mind](#)
- [U Lifeline](#)
- [NAMI \(National Alliance on Mental Illness\);](#)
 - *helpline*: 800-950-6264
 - *or text* NAMI TO 741741

2

MEDITATION AND MINDFULNESS

- [Calm](#)
- [Noisli](#)
- [Liberate \(for People of Color\)](#)
- [Stop Breathe Think](#)
- [Trauma Conscious Yoga](#)
- [Black Lives Matter Mindfulness Meditation](#)

3

SELF CARE

- [Self-Care Game](#)
- [Self-Care Resources](#)
- [Creating a Self-Care Plan](#)
- [Academic Mental Health Collective](#)
- [Active Minds Mental Health](#)

4

MANAGING STRESS & PTSD

- [A Very Mixed Record on Grad Student Mental Health](#)
- [Battling Bullying in Academe](#)
- [Coping with PTSD](#)
- [Faculty Reflections on Stress](#)
- [Identifying PTSD Triggers](#)

5

RESISTING THE FALLACY OF UNWORTHINESS

- [What Happens After You've Gotten All the A's](#)
- [A Phenomenology of Shame, or, Life \(and Death\) in Graduate School](#)
- [CV of Failure](#)
- [Debunking the Shame In You Should Be Writing](#)
- [Self-Criticism and the Academy](#)
- [Still Here, Still Fighting: My Nonlinear Journey to ABD](#)

6

SUGGESTED SCHOLARLY READING

- [Austin, 2002](#)
- [Gildersleeve, Croom, & Vasquez, 2011](#)
- [McGee & Stovall, 2015](#)
- [Posselt, Reyes, Slay., Kamimura, & Porter, 2017](#)
- [Truong & Museus, 2012](#)



CIMMS Post-Doctoral Research Associate – Applications of Unpiloted Aerial Systems (UAS) in Characterizing High Wind Damage

The Cooperative Institute for Mesoscale Meteorological Studies (CIMMS) at The University of Oklahoma (OU) working collaboratively with NOAA's National Severe Storms Laboratory (NSSL), is currently looking for a highly-qualified Post-Doctoral Research Associate to provide scientific and technological expertise in the use of Unpiloted Aerial Systems (UAS) to characterize high wind damage from convective storms. The Post-Doc will provide leadership in the procurement, development, and application of UAS for use in research applications at CIMMS/NSSL, primarily for the use of performing damage surveys to better understand severe convective storms, but collaboration with National Weather Service Forecast Offices and local emergency management for use in operations is encouraged. The position will require close collaboration with the NOAA UAS program office to ensure all FAA and other agency requirements are being followed. Furthermore, the position will require working with agricultural extension agents, and local and state forest services as appropriate. This position will include participation in the field for upcoming research projects and will require the Post-Doc to integrate UAS, and remote-sensing capabilities derived from visible and multi-spectral imagery for surveying damage, into these field programs. The incumbent will work directly with research scientists at NSSL and will be encouraged to collaborate actively with scientists from other institutions with expertise in UAS (e.g. the OU Center for Autonomous Sensing and Sampling). The position will be based at NSSL in Norman, OK within the National Weather Center (NWC), a highly collaborative forecasting, research, and academic environment containing a number of NOAA and OU organizations.

The principal duties of this position are:

1. Provide scientific and technical expertise in the procurement, development, and use of UAS for a) the advancement of our understanding of severe convective weather through damage identification and characterization and b) the consideration of systems that could enhance the research and operational capabilities of NOAA.
2. Integrate UAS applications for damage surveying into field operations for upcoming field programs that will observe severe convective weather, as well as lead individual scientific analysis of data collected by UAS.
3. Contribute to scientific publications and present scientific results at professional off-site conferences, workshops, symposia, and hazardous-weather-related outreach events.

The minimum qualifications for the position are:

1. A Ph.D. (or ABD) in meteorology or atmospheric science;
2. Expertise in areas of UAS applications and remote sensing, and applications to severe convective weather. Applicants should identify experience in these areas, including

remote-sensing systems, software used to analyze data from remote-sensing systems, and application of UAS imagery to characterize damage;

3. Experience collaborating (either for funded or proposed projects) with NOAA operational entities to explore the use of UAS in conducting damage surveys.

Preferred qualifications include experience with UAS and field work.

Normal working hours will be observed except for irregular hours during field data collection and/or conferences/workshops conducted at remote sites. The incumbent will work under general supervision, and is expected to contribute to field efforts as needed, but will work independently and determine his/her own specific research project(s) related to the position description.

The beginning salary for this position will be based on qualifications and experience and will include University benefits. Information on benefits may be found at: <http://hr.ou.edu/>. The expected start date for the position is no later than August 2020.

Appointment to this position is contingent on passing a Department of Commerce/NOAA background check.

To apply, please forward your CV, cover letter and list of three references to:

CIMMS Careers
University of Oklahoma CIMMS
120 David L. Boren Blvd., Suite 2100
Norman, OK 73072-7304
CIMMS-careers@ou.edu
ATTN: UAS Post-Doc

CIMMS Research Fellow – Weather and Transportation Applications

The Cooperative Institute for Mesoscale Meteorological Studies (CIMMS) at the University of Oklahoma and the National Severe Storms Laboratory (NSSL) is currently seeking a fixed-term (12-24 months) Research Fellow starting in Summer 2020 to assist with the development of impacts-based decision support tools as a part of the Transportation Applications Team. This team works collaboratively with the National Weather Service (NWS) and the Federal Aviation Administration (FAA) to develop the next generation of products and tools for use within operations, with particular focus on decision support for transportation-related warnings/advisories (e.g., blizzards, aircraft hail encounters, icing, etc.).

The duties of this position will be to:

1. Work collaboratively with the NWS and FAA to develop decision-support tools for use in operations;
2. Assist with quality control and evaluation of observations within the Multi-Radar/Multi-Sensor (MRMS) system (<http://mrms.nssl.noaa.gov>).

The minimum qualifications for the position are:

1. A Bachelor's Degree in Meteorology, Geography, Civil Engineering, or another related area;
2. Experience in programming (C++, Python, Fortran);
3. Experience with visualization of meteorological datasets.

Please identify experience with programming and meteorological datasets in your cover letter.

Supervision will be provided by CIMMS staff. The incumbent is not expected to supervise other employees. Salary for this position is \$40,000. Standard insurance benefits are included (more information may be found at <http://www.hr.ou.edu>). The incumbent would ideally start in Summer 2020, but the starting date is negotiable.

To apply for the position, please forward your resume, cover letter and list of three references to:

CIMMS Careers
University of Oklahoma
120 David L. Boren Blvd., Suite 2100
Norman, OK 73072-7304
CIMMS-careers@ou.edu
ATTN: Transportation Applications

CIMMS Research Associate – Scientific Programmer for Developing Graphical Forecast Editor Training in AWIPS

The Cooperative Institute for Mesoscale Meteorological Studies (CIMMS) at the University of Oklahoma (OU) seeks to fill a Research Associate position to support the National Oceanic and Atmospheric Administration (NOAA) Forecast Decision Training Division (FDTD) in Boulder, Colorado, on training for the Advanced Weather Interactive Processing System (AWIPS) Graphical Forecast Editor (GFE).

The principal duties of this position are:

- Development of training and online reference material for new and existing AWIPS GFE Focal Points at NWS Weather Forecast Offices and National Centers
- Analysis of current and future versions of the GFE software, including local settings and implementation at various NWS weather forecast offices, in order to identify operational best practices

Required Qualifications:

- A Master's degree or higher in Meteorology, Atmospheric Science, Computer Science, or related area
- Strong web programming (e.g., HTML, XML) skills
- Experience developing training or technical documentation
- Experience with Python scripting
- Experience with Linux (or Unix) operating systems
- Excellent oral and written communication skills
- Ability to work and communicate effectively in diverse team environments
- U.S. Citizenship or Permanent Residency is required

Desired Qualifications:

- Experience developing interactive web-based learning applications for technical users
- Experience with GFE configuration and Python in the AWIPS environment
- Knowledge of how GFE is used, configured, and maintained by NWS field sites

Normal working hours will be observed. This position will primarily be located in Boulder, Colorado with possible trips to NWS WFO field sites and/or data centers.

Supervision will be provided by CIMMS staff. Technical oversight will be provided jointly by CIMMS Research Associates and FDTD management. Works under general supervision but is expected to work in a team environment and determine action to be taken in handling all but unusual situations. Incumbent is not expected to supervise other employees.

The salary for this position is very competitive and will be based on experience, skills, and knowledge. Information on University benefits may be found at <https://hr.ou.edu/>. The position is expected to begin May-June 2020.

To apply for the position, please forward your resume, cover letter and list of three references to:

CIMMS Careers
University of Oklahoma CIMMS
120 David L. Boren Blvd., Suite 2100
Norman, OK 73072-7304
CIMMS-careers@ou.edu
ATTN: Scientific Programmer AWIPS-GFE

The University of Oklahoma is an equal opportunity/Affirmative Action employer.

Research Associate – Hazardous Weather Testbed

The Cooperative Institute for Mesoscale Meteorological Studies (CIMMS) at The University of Oklahoma currently is seeking a research associate to collaborate with scientists in the National Severe Storms Laboratory's (NSSL) Warning Research & Development Division on the implementation of severe weather applications to support research to operations initiative via transition into the National Weather Service's Advanced Weather Interactive Processing System-2nd generation (AWIPS2) operational software platform. The position is located in Norman, Oklahoma.

The duties of this position are:

1. Integration of NSSL's experimental datasets into AWIPS2;
2. Development of new applications and visualization techniques in the AWIPS2 environment and platform;
3. Support and participate in applied research and development and operational experiments in the Hazardous Weather Testbed;
4. Acquire and apply expertise about severe local storms in the warning decision-making process.

The minimum qualifications for the position are:

1. A Masters Degree in Meteorology, Atmospheric Science, Computer Science/Software Engineering, Geographic Information Systems, or related area;
2. Computer programming experience (Linux, Java, Python, PostgreSQL, Eclipse, etc.);
3. US Citizenship or Permanent Residency.

Applicants should identify expertise with any of the following areas: AWIPS2; Computer Programming; Visualization; Geographic Information Systems. Some knowledge of National Weather Service warning and forecast operations and weather radar would be beneficial. Good oral and written communication skills are needed for the position. Please indicate additional experience with operating systems and programming skills (including web-based and mobile applications) beyond the requirements stated above.

Normal working hours will be observed except for occasional irregular hours during data collection, warning/forecast experiments, or workshops conducted at remote sites.

General supervision will be provided by the CIMMS leadership. Technical oversight will be provided by CIMMS staff, NSSL scientists, and NSSL management. Appointee will work under general supervision but is expected to determine action to be taken in handling all but unusual situations. Incumbent in this position is not expected to supervise other employees, but may serve as a leader of technical teams.

The beginning salary will be based on qualifications and experience with University benefits. Information on benefits may be found at <https://www.hr.ou.edu>. The position is expected to begin May 2020.

To apply for the position, please forward your resume, cover letter and list of three references to:

CIMMS Careers
University of Oklahoma CIMMS
120 David L. Boren Blvd., Suite 2100
Norman, OK 73072-7304
CIMMS-careers@ou.edu
Job Requisition – AWIPS

The University of Oklahoma is an equal opportunity/Affirmative Action employer.

Purdue University Chorafas Foundation Awards

Deadline: March 6, 2020

Purdue University will nominate one young PhD graduate student researcher for the 2020 Chorafas Foundation Award. The **\$5,000** award, made available by the Dimitris N. Chorafas Foundation, is intended as a prize for advanced studies and/or research during or shortly after graduation. The Dimitris N. Chorafas Foundation was founded in 1992 under the leadership of Prof. Dimitris N. Chorafas. Each year, the Foundation awards prizes to more than 20 universities, with the goal of stimulating promising young researchers.

Process:

- Selection of a Purdue nominee will be a two-phase process. Students are invited to submit pre-proposals for the Chorafas Foundation Award by **Friday, March 6, 2020**. A maximum of 5 finalists will be selected to submit a full nomination package. The deadline for submitting full nomination packets is **March 31, 2020**.
- The requirements and criteria for pre-proposals and final proposals are provided on page 2.
- All pre-proposals should be sent to the **attention of Amber Everest, Office of Research and Innovation, College of Engineering (ARMS 3000)**, or electronically as one PDF File to evera@purdue.edu.

Subject Areas for the Chorafas Award:

Research projects in the following areas are eligible for the Chorafas prize:

- Research, Development and Applications in Advanced Technology
- Life sciences and Medicine
- Physics, Chemistry, Sciences of the Very Small and the Very Large
- Formal sciences: Mathematics, Logic, Statistics and their Applications
- Hard Science Solutions to Millennium Problems
- Interdisciplinary Scientific Research

Eligibility:

- Applications are invited from PhD students enrolled in any college at Purdue.
- Applicants may not be older than 32 years on May 31, 2020 (born after 5/31/1988).
- Candidate students must have graduated or be expected to graduate between June 1, 2019 and December 31, 2020. Candidates can only be nominated once.

Pre-proposals. Applicants must submit cover page, a short cover letter, a curriculum vitae, a one page summary of the candidate's dissertation research, and a one page description of the planned use of the Chorafas award. Candidates are strongly encouraged to include a list of publications, professional presentations, and examples of significant leadership.

Final proposals. Applicants selected as finalists must submit the following documents for consideration:

- 1) Cover page with the following information
 - Full Name (LAST, first)
 - Gender
 - Title (e.g. Dr)
 - Candidate's home address (for issuing prize check)
 - Date of Birth (DD/MM/YYYY)
 - Title of the Thesis
 - Graduation Date (or expected graduation date) (MM/YYYY)
 - Field of Research (choose the closest one of the following fields: Life Sciences & Medicine, Physics, Chemistry, Mathematics, Informatics/Computer Science, Engineering of Finance & Risk Management).
 - Passport size photo
- 2) Complete CV (including internship if any) + a passport size photo
- 3) List of publications (only papers where the candidate is first author; the paper must be either published/in press/accepted in peer-reviewed journals)
- 4) Summary of Research (up to one page only)
- 5) Candidate's personal note - *Why my research benefits humanity...* (up to one page only)
- 6) Two letters of recommendation. One must be from the PhD supervisor. The salutation that should be used is ***Dear Members of the Board***
- 7) Abstracts of first authored papers in peer-reviewed journals (up to 5 abstracts - no longer than ½ page each)

COVER PAGE OF CANDIDATE FILE

Passport Photo Here

Candidate's Full Name:

Candidate's Gender:

Candidate Title: (e.g. Dr.):

Candidate Home Address:

Candidate's Date of Birth:

Title of Thesis:

Date or Estimated Date of Graduation:

Field of Research:

French Culture, Food & Health

May 23-31, 2020
Roanne, France

NUTR 39800



For more information, contact:

Rachel Clark
rachelclark@purdue.edu

Where will Purdue take you?
STUDY ABROAD

www.studyabroad.purdue.edu

Program Highlights

- Cooking classes with a French Chef
- Pair wine and cheese
- Learn a little French
- Explore Lyon and Roanne
- Visit a chocolate factory
- Meet wine experts
- Stay in a French villa
- Taste wine with a local winemaker
- Visit a medieval village
- Earn 2 credits
- Meets STS learning outcome





Applications are now being accepted for NOAA's Okeanos Explorer-in-Training Program

NOAA Office of Ocean Exploration and Research (OER) in partnership with Cooperative Programs for the Advancement of Earth System Science (CPAESS), hosts undergraduate and graduate students as well as individuals who have recently graduated from a higher education program in the Okeanos Explorer-in-Training program. Participants gain valuable experience in deepwater mapping and exploration using the latest tools and technology.

NOAA's OER is the only federal program dedicated to exploring our deep ocean, closing the prominent gap in our basic understanding of U.S. deep waters and seafloor and delivering the ocean information needed to strengthen the economy, health, and security of our nation. OER explores previously unknown areas of our deep ocean, making discoveries of scientific, economic, and cultural value.

The NOAA Ship Okeanos Explorer is the Nation's only federal vessel dedicated to ocean exploration. The ship is equipped with advanced tools that support systematic exploration of unknown ocean regions. High-resolution sonars, deep-water remotely operated vehicles, and telepresence technology are used to collect baseline information in unexplored areas.

CPAESS is currently seeking Mapping trainees to participate in the Okeanos Explorer Explorer-in-Training (EiT) program for the 2020 field season. The EiT program will provide the opportunity to gain experience using an advanced multibeam bathymetric sonar mapping system, while contributing in a significant way to the Okeanos Explorer.

Okeanos Explorer exploration for 2020 will focus on the Atlantic Ocean, including the US Exclusive Economic Zone near Puerto Rico, the US Virgin Islands, and New England; the Mid Atlantic Ridge, and Atlantic Maritime Canada. Current undergraduate and graduate students, and recent graduates from higher education institutions in these regions are encouraged to apply. Students traditionally underrepresented in the sciences are also encouraged to apply.

Application Deadline

The application deadline for the 2020 Okeanos Explorer-in-Training Program is January 31, 2020.

Ocean Exploration

There are five 20–30 day cruises in April through September. The time at sea for this session begins April 5, 2020 and runs through September 12, 2020.

Curious?

Check out the live feed webcam and learn more about the work of Okeanos at: oceanexplorer.noaa.gov/welcome.html

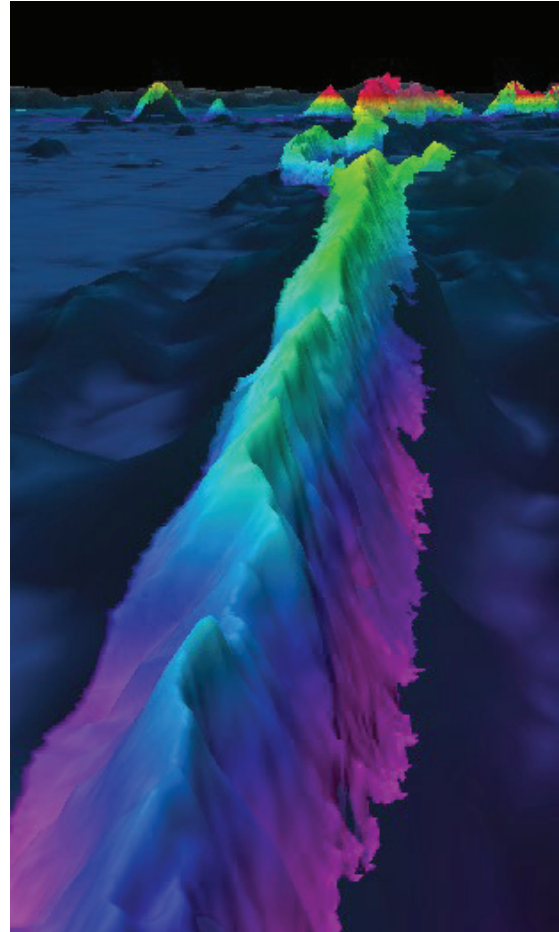
Discover & Explore

Learn more about the NOAA Okeanos Explorer-In-Training program at:

[oceanexplorer.noaa.gov/
okeanos/training.html](http://oceanexplorer.noaa.gov/okeanos/training.html)

Undergraduate, Graduate, and Recently Graduated Students may apply at:

[cpaess.ucar.edu/
okeanos-application-2020](http://cpaess.ucar.edu/okeanos-application-2020)



A steeply sloped ridge along the Nova-Canton Trough mapped during the CAPSTONE Telepresence Mapping in Pacific Marine Protected Areas expedition. Onboard were Explorers-in-Training Sarah Rosenthal and Jay Chitnis. Image courtesy of the NOAA Office of Ocean Exploration and Research.





Susan Bulkeley Butler Center for

LEADERSHIP
EXCELLENCE

Butler Center-ADVANCE Working Paper Series

Navigating Careers in the Academy: Gender, Race and Class

The Butler Center in partnership with ADVANCE -Center for Faculty Success has a Working Paper Series focusing on navigating careers in the academy. This peer reviewed series includes work by senior scholars, graduate students, and faculty at all stages as a space for the discussion of issues related to academic careers. The series will serve as a means for documenting and sharing interventions and/or practices and/or processes developed by and/or utilized by faculty and post-docs for navigating careers.

The topics may include: strategies for diversifying faculty, staff and students; negotiating intersections of gender, race/ethnicity, and nationality in the academy; creating inclusive research environments; mechanisms for involving graduate and undergraduate students in research; traversing teaching/the classroom; considering inclusivity in mentoring faculty/students; lessons to be learned from experiences of faculty in the academy; gender biases – in the classroom, P&T evaluations, leadership; best practices around creating an inclusive climate; effective programs/interventions; intersectionality; role of professional societies in achieving success and excellence. This list is indicative of topics of interest but is by no means exhaustive. We encourage manuscripts that bridge the gap between research, policy, and practice. The following types of submissions will be considered for this working paper series: reflection papers; summaries of research; write-ups of speakers or meetings; white papers; preliminary findings; conceptual pieces; creative works; best practices.

The working papers may be anywhere between 2 pages (such as best practices) to 20 pages in length. The papers will be peer-reviewed. The authors will retain the copyright to their papers, allowing them to republish their work elsewhere.

ADVANCE PURDUE

CENTER FOR FACULTY SUCCESS

www.purdue.edu/butler



Susan Bulkeley Butler Center for
**LEADERSHIP
EXCELLENCE**

**Susan Bulkeley Butler Center for Leadership Excellence and ADVANCE
Purdue University
WORKING PAPER SERIES
Navigating Careers in the Academy: Gender, Race, and Class**

**CALL FOR ABSTRACTS FOR THE FALL 2020 ISSUE IS NOW OPEN
DEADLINE: Friday, August 21, 2020**

Abstracts for the fall 2020 issue of the Butler Center-ADVANCE Working Paper Series' titled "Navigating Careers in the Academy: Gender, Race, and Class" are now being accepted. The deadline for submission of abstracts is Friday, August 21, 2020.

We invite submissions that fall under the broad topic of academic careers (as noted below, please see our website for details). Abstracts must have specific aims or questions proposed to be addressed; clear argument/s; and make contribution/s that will benefit those in the academy. Abstracts should include the form/s of evidence that will be used – forms of data, cases, reflection based on experiences and so on.

Abstracts must be 150 words or less and should be emailed to butler-advance@purdue.edu. Please include the following information in your submission:

Title of the paper (tentative is acceptable)

Name of authors, rank or title, and name of department (in order of authorship)

Email of corresponding author

Abstracts will be reviewed by the co-editors and the editorial board. If the abstract suggests that the paper is suitable for the Working Paper Series, the author/s will be required to submit the full-length paper within about six weeks. If the author/s require additional time for submission of the full-length paper, they may request for considering their submission for the following issue (Spring 2021). The co-editors' decision to accept and publish the paper will be made based on peer reviews.

Past issues and more information about manuscript submission is available online at www.purdue.edu/butler/working/index.html or by emailing butler-advance@purdue.edu.