

March 28, 2011

## SENIOR EXPERIENCE IN ATMOSPHERIC RESEARCH (SEAR) PROJECT

Students involved in the Senior Experience in Atmospheric Research (SEAR) project traveled to Puerto Rico over spring break to install meteorological equipment in order to understand the local development of sea breeze on the western coast. Students also used the Weather Research and Forecasting model to forecast occurrences of sea breeze so that they could also make pilot balloon observations of the vertical wind profile. Despite the long hours in the field each day, students managed to fit in sightings of a waterspout at sunset, swimming in the bioluminescent bay, and snorkeling and surfing with our Puerto Rican colleagues.

Students participating in the trip were Kathryn Demchak, Matthew Dixon, Brian Doogs, Kristen Fischer, Brittany Herrholtz, Erik Larson, Timothy Lucko, Ryan Meiszberg, Catherine Simpson,



Click image for larger view

Kevin Van Leer, Joseph Woznicki, and Puerto Rican students Rosimar Rios, Nestor Flecha, Gian Villamil, and Alina Nieves. The project is supervised by Jennifer Haase, Ki-Hong Min, Jeff Trapp and Mark Jury from the University of Puerto Rico, Mayaguez.

For more information about the science and the data collected, go to <http://eas391.pbwiki.com> and request access. To see the blog from the week in Puerto Rico, go to <http://seabreezepu-pr.blogspot.com/>.

As a continuation of this collaboration between Purdue and UPRM, there is the opportunity for Purdue faculty to advise a junior or senior undergraduate student for the summer 2011, with all expenses and stipends paid for by the UPRM. Interested faculty should contact [jhaase@purdue.edu](mailto:jhaase@purdue.edu).

## UPCOMING MEETING

**Monday, April 4**

- EAS Primary Committee, CIVL 3201 (11:30 a.m.)

## EAS SEMINARS

**Monday, March 28, at 3:30 p.m. in CIVL 1252:** "From Dust to Planets, an Isotope Approach." Liping Qin, Center for Isotope Geochemistry, Lawrence Berkeley National Laboratory (*Planetary Science Faculty Candidate*)

**Thursday, March 31, at 3:30 p.m. in CIVL 1252:** "River Anomalies on Earth, Mars, and Titan: Studies in Planetary Fluvial Geomorphology." Devon Burr, University of Tennessee (*Planetary Science Faculty Candidate*)

Refreshments for both seminars at 3 p.m. in CIVL 2201

**Monday, April 4, at 9 a.m. in CIVL 2201:** "Insights on Melt Transport in the Earth from Field Studies, Experiments, and Models." Chris Andronicos, Cornell University (*light breakfast provided*)

For more information, see the EAS online [calendar](#).

## OUR RECENT PUBLICATIONS

Li, Y., G. Liu, P. Kong, J. Harbor, Y. Chen, and M. Caffee, 2011: Cosmogenic nuclide constraints on glacial landform evolution in the source area of the Urumqi River, Tian Shan, China. *Journal of Quaternary Science*. DOI: 10.1002/jqs.1454.

Sun, W.-Y., K.-H. Min, and J.-D. Chern, 2011: Numerical study of 1998 late summer flood in East Asia, *Asia-Pacific J. Atmos. Sci.*, DOI: 10.1007/s13143-011-0003-1.

## WISP MEETING

"EAS Women Faculty: The Balancing Act"

**Date:** April 5, 2011

**Room:** CIVL 2201

**Time:** 12:00 - 1:00pm

## RECENT PRESENTATIONS

Jeff Trapp gave the following invited talk at the Second Midwest Bow Echo Workshop: Exploring the Existence of "Embedded Supercells" within Quasi-linear Convective Systems. The workshop was held on the campus of St. Louis University, 8-9 March 2011. Angie Lese (Purdue B.S., M.S.) was one of the coordinators. Other EAS alumni participating in the workshop were John Chamberlain and Tony Lupo.



Angie and Jon  
(Click image for larger view)

Wen-Yih Sun presented two invited papers at the National Central University in Taiwan as follows: "Instability of Leap-frog and forward-backward scheme" on March 16; "One-Dimensional Sea Ice-Ocean Model Applied to SHEBA Experiment in 1997-1998 Winter" on March 18.

On March 14, 2011, C. Kendra Gotangco Castillo gave a talk at the Land Model Working Group meeting at the National Center for Atmospheric Research (NCAR) in Boulder, CO, entitled "Evaluation of the new CNDV option of the Community Land Model: Effects of dynamic vegetation and interactive nitrogen on CLM4 means and variability."

Terry West attended the Joint Meeting of the North-Central/Northeastern Sections of the Geological Society of America in Pittsburgh, PA from March 20-22, 2011. Dr. West moderated the session on Applied Geology: Environmental, Engineering, and Hydrogeologic Applications and gave the following oral presentation: "Geologic History of the Wabash River in West Lafayette, Indiana and Its Effects on Residential Construction in Rural Area." Dr Abdul Shakoor from Kent State University, a former Purdue PhD student, served as co-moderator for the session and one of his former students co-authored a paper with him. There were ten papers presented in this half-day session.

Grace Conyers also attended the Joint Meeting of the North-Central/Northeastern Sections of the Geological Society of America in Pittsburgh, PA from March 20-22, 2011. Grace gave an oral presentation entitled, "Do Fungi Transport <sup>10</sup>Be During Wood Degradation?"

Nowack, R.L. (2011) Seismic Imaging of Teleseismic Waves using Gaussian Beams, SIAM Conference on Mathematics and Computational Issues in the Geosciences, March 21-24, Long Beach, CA.

Sonia Lasher-Trapp and graduate student Alexandria Johnson gave presentations at the ICE-T field campaign planning workshop at NCAR in Boulder, CO on 24-25 March.

Professor Lasher-Trapp also gave an invited seminar to the Cloud Physics across Scales group at NCAR on 25 March, entitled "Progress on Entrainment and its Effects in Small Cumuli."

---

## IN THE NEWS

*Geology Today's* March-April issue included a feature on a recent paper published by Jakob Heyman (EAS Post Doc recently arrived from Stockholm University). The feature summarized Jakob's article under the title "Too young or too old – are boulder exposure ages reliable?" Purdue co-authors on this work that was published in the journal *Earth and Planetary Science Letters* are Marc Caffee and Jon Harbor, and the feature included a nice picture of Purdue MS student Ping Fu sampling a glacial erratic on the Tibetan Plateau.

---

## CONGRATULATIONS!

Juan A. Crespo received the Research Experience for Undergraduates (REU) at the University of Michigan Space Physics Research Laboratory for the summer 2011. Undergraduate research stipends are awarded on the basis of academic excellence, motivation, scientific potential and compatibility of interests and long-term career goals with current SPRL research interests.

Kandace Kiefer is a Purdue finalist for The Astronaut Scholarship Foundation's (ASF) award, which is for outstanding students who exhibit motivation, imagination, and exceptional performance in the fields of engineering and natural or applied sciences at one of the twenty-five schools with which the Foundation has agreements.

---

## AGU FALL MEETING DEADLINES

AGU Fall Meeting Deadlines:

Session Proposals: **20 April**

Abstract Submissions: **4 August**

2011 Fall Meeting • 5-9 December • San Francisco, California, USA

Visit us for more information at

<http://www.agu.org/meetings/>

---

## EAS LIBRARY'S NEWEST BOOKS

Click [here](#) to see a list of new books in the EAS library in the last two weeks.

## NATIONAL LABS @ PURDUE DAY

**Monday, April 4**

Join us April 4th to learn about research, internship and employment opportunities at national laboratories.

Meet with representatives from:

[Argonne National Laboratory](#)  
[Brookhaven National Laboratory](#)  
[Oak Ridge National Laboratory](#)  
[Pacific Northwest National Laboratory](#)  
[MIT Lincoln Laboratory](#)  
[Thomas Jefferson National Accelerator Facility](#)

### Tentative Agenda

- Lab Info Sessions
- Lab and Faculty Networking Session
- “Career Opportunities” Fair

Email [profdev@purdue.edu](mailto:profdev@purdue.edu) with questions.

Register online at:

[https://ias.itap.purdue.edu/rqs/wgb\\_workshop\\_disp\\_online\\_workshop](https://ias.itap.purdue.edu/rqs/wgb_workshop_disp_online_workshop)

---

**THE CENTER FOR ASTRONOMY EDUCATION (CAE) IS SPONSORING A TEACHING AND LEARNING RETREAT IN HAWAII THIS SUMMER FOR EARTH AND SPACE SCIENCE GRADUATE STUDENTS AND POSTDOCS: TRAVEL SUPPORT AVAILABLE!**

The Center for Astronomy Education (CAE) is presenting a 2-day professional development retreat, on the Big Island of Hawai'i, for Earth and

Space Science graduate students and postdocs (this includes astrophysics, astronomy, planetary science, geosciences, etc.) – and through funding from the NSF, we'll be able to pay the travel expenses for many of you to come be a part of this very special experience! [Read more...](#)

---

### THE ROBERT LEVITON AWARD

The AMS Committee on Measurements invites submissions for the Robert Leviton Award. Application deadline is April 15th. Students should submit their paper to Dr. Kenneth Underwood ([ken@minisodar.com](mailto:ken@minisodar.com)) for consideration. [Read more...](#)

---

### MAYOR GREG BALLARD INTERNSHIP PROGRAM

Click [here](#) for internship opportunities for both undergrads and grads. Note the deadline to have resumes and three (3) references submitted via Email is **March 31<sup>st</sup>**.

---

### HAPPY BIRTHDAY!!!

Dee Gillespie – March 28



### IMPORTANT NOTICE ABOUT THIS NEWSLETTER

This newsletter will now be used as the primary information source for current and upcoming events, announcements, awards, grant opportunities, and other happenings in our department and around campus. Active links to additional information will be provided as needed. Individual email announcements will no longer be sent unless the content is time-sensitive. We will continue to include our publications, presentations and other recent news items as well. Those using paper copies of the newsletter should go to our newsletter archive on the EAS website at [www.purdue.edu/eas/](http://www.purdue.edu/eas/) and **Click on News** to access active links as needed. Material for inclusion in the newsletter should be submitted to Gina Richey ([grichey@purdue.edu](mailto:grichey@purdue.edu)) by **Friday noon** of each week for inclusion in the Monday issue. **If it is in the newsletter, we assume you know about it and no other reminders are needed.**

For answers to common technology questions and the latest updates from the EAS Technology Support staff, please visit [http://www.purdue.edu/eas/info\\_tech/index.php](http://www.purdue.edu/eas/info_tech/index.php).

Also, as an additional resource for information about departmental events, seminars, deadlines, etc., see our departmental calendar at <http://calendar.science.purdue.edu/eas/seminars>.



# SPRING LAWN MOWER REVITALIZATION

SPONSORED BY:

PURDUE AGRICULTURE SYSTEMS MANAGEMENT CLUB

LET THE PURDUE ASM CLUB GET YOUR LAWNMOWER READY FOR SPRING MOWING!



INCLUDED SERVICES  
CHANGE ENGINE OIL  
SHARPEN BLADE  
SERVICE AIR FILTER  
CLEAN MOWER DECK  
POWER WASH EXTERIOR

**COST: \$30**

## MOWER DROP OFF

MON MAR. 28 – FRI APR. 1  
4PM-7PM

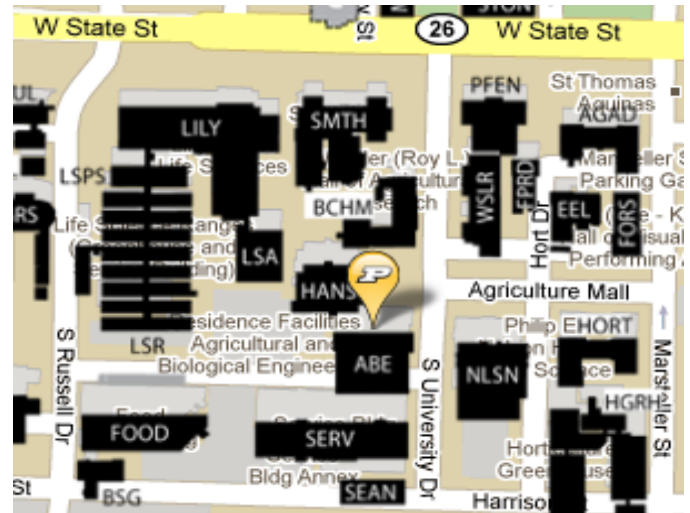
## MOWER PICK UP

MON APR. 4 – FRI APR. 8  
4PM-7PM

PICK UP & DELIVERY ARE AVAILABLE FOR AN  
ADDITIONAL \$20

LOCATION: ABE BUILDING

225 South University Street West Lafayette, IN 47907



## FOR MORE INFORMATION CONTACT

EVAN GUCKIEN, CLUB PRESIDENT

BEN DAILY, VICE PRESIDENT

EGUCKIEN @ PURDUE.EDU 574-709-7958

BDAILY @ PURDUE.EDU 812-371-5644

# Society of Petrophysicists and Well Log Analysts Foundation



\$\$\$

## GRANT OPPORTUNITIES FOR GRADUATE RESEARCH

The Society of Petrophysicists and Well Log Analysts Foundation provides financial assistance to eligible and qualified recipients pursuing a degree program related to oil, gas, or other mineral formation evaluation. Grants are available for graduate students as well as faculty members to support research studies and educational projects related to formation evaluation and are awarded on a competitive basis.

\$\$\$

\$\$\$

\$\$\$

**DEADLINE for the 2011-2012 Academic Year:**

**April 1, 2011**

\$\$\$

\$\$\$

More information and application forms available at:  
<http://www.spwla.org>, or contact:

SPWLA Scholarship and Grant Committee

Tel: 713-947-8727; e-mail: [spwla@spwla.org](mailto:spwla@spwla.org)



**04.09. - 09.09.2011**

**Optional:  
1 day excursion  
09.09.2011  
(for details see webpage)**

**Location:**

**Bergün  
Switzerland**

**Geochronology**



Swiss Summer School

**The Summer School is open to young researchers worldwide.  
(PhD students & Post-Docs)**

## Topics:

### Dating techniques

- numerical methods (radiocarbon, exposure dating with cosmogenic nuclides, OSL, etc.); dendrochronology, Ice-core chronologies as well as relative methods (soil weathering, Schmidt-hammer technique, etc.)

### Reconstruction of environmental parameters

- dendroecology, stable isotopes, etc.

### Climate and landscape history

- Forest fires, charcoal identification and dating

### Reconstructing geomorphic processes

- Avalanches, debris flows, rock fall, etc.

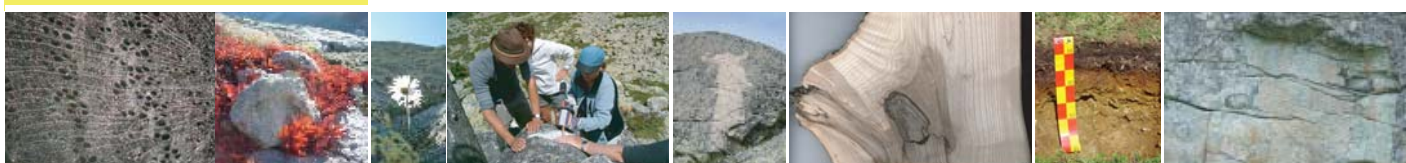
Participation is competitive & will be limited to a max. of 20.  
The registration fee includes full accommodation (room sharing),  
breakfast, lunch and diner, excursion and teaching material.

**Registration fee: 880,- CHF (~ 600,- Euro / ~ 770,- USD)**

**Deadline for applications: 30 April 2011**

**On-line information and registration:**

**<http://www.geo.uzh.ch/geochronology/>**



## Organising committee / Lecturers:

Markus Egli (University of Zürich)  
Dagmar Brandova (University of Zürich)  
Paolo Cherubini (WSL)  
Holger Gärtner (WSL)  
Susan Ivy-Ochs (University of Zürich / ETH)  
Klaus Felix Kaiser (University of Zürich, WSL)

