

December 15, 2014

[Like EAPS on Facebook](#)
[Follow EAPS on Twitter](#)

UPCOMING EAPS MEETINGS

EAPS RECEPTIONS AT CONFERENCES

AGU (SAN FRANCISCO)

Wednesday, Dec. 17, 2014

7:00 - 9:00 p.m.

Thirsty Bear-Billar Room

AMS (PHOENIX)

Tuesday, Jan. 6, 2015

6:30 - 8:30 p.m.

Sheraton Phoenix Downtown Hotel (Laveen A)

~~~~~

### SPRING FACULTY MEETING SCHEDULE

Tuesday, Jan. 27<sup>th</sup>, Feb. 10<sup>th</sup> (Dean's Visit to Dept.),

Mar. 24<sup>th</sup>, and Apr. 14<sup>th</sup>, 2015

3:00-4:30 p.m.

HAMP 3201

~~~~~

OTHER IMPORTANT DATES TO REMEMBER

FORM 40s DUE

Jan. 16th / Mar. 14th, 2015

EAPS DISTINGUISHED SCIENCE ALUMNI AWARD RECEPTION

April 17, 2015

EAPS ANNUAL AWARDS BANQUET

Monday, April 20, 2015

Ross-Ade Pavilion

EAPS ALUMNI ADVISORY BOARD MEETING

Tuesday, April 21, 2015

GRAD EXPO

February 27th & 28th, 2015

EAPS NEWS

EAPS OMBUDSMAN

What is an Ombudsman? The ombudsmen are an informal, neutral, confidential resource for people in the department, especially students, to raise questions or concerns about any aspect of their academic experience. The EAPS ombudsman is Barbara Gibson (HAMP 2169B; barbara@purdue.edu) - please feel free to contact her if needed.

UNDERGRADUATE AND GRADUATE STUDENT INFORMATION

EAPS DECEMBER 2014 CANDIDATES

Chelsea L. Ambriz
Andrea E. Falk
Bryan S. Kuhn
Zachary L. Muchow
Clarence B. Ponsler
Hans P. Taylor
Natalie K. Vezina
Kelly K. Vondracek



Congratulations!! College of Science Commencement is **Sunday, December 21, 2014, 9:30 a.m.** in the Elliott Hall of Music.

Ceremonies will be aired live on Comcast Channel 5 and Boiler TV Channel 26.4. All speeches will be captioned for the hearing impaired. The ceremonies also will be shown live via webcast at <http://www.kaltura.com/tiny/ybmx2>.

Commencement videos will be available for \$30 per DVD. Order forms can be obtained at the Loeb Playhouse box office, online at http://www.purdue.edu/registrar/pdf/DVD_Form.pdf or by calling 765-494-3933. Forms may be submitted after the ceremony within two weeks of the event.

**CONVERSATION WITH AN ENVIRONMENTAL LEADER
SERIES
SPRING 2015**

The conversation with an Environmental Leader series is an opportunity for undergraduate students to engage in meaningful dialog with a diverse range of civic, corporate, and non-profit environmental leaders in an informal setting over dinner. These leaders will share their personal career journeys and perspectives on environmental leadership and reflect on the kinds of skills and interests careers in environmental related fields require. These events are a way for students to explore how a wide range of professions focus on solving important environmental challenges locally, nationally, and internationally, in the public and private sectors. Each event is structured as an informal conversation between an environmental leader and a small group of students, including dinner. Space is limited so registration is required to participate.

[Register for Conversation with an Environmental Leader](#)

February 5, 2015: Jessee Kharbanda, Executive Director, Hoosier Environmental Council

March 5, 2015: Melody Park, Director of the Indianapolis Office of Sustainability

April 9, 2015: Dr. Perre Burns, Principal, Burns Environmental Engineering, Inc.

~~~~~

**ONLINE W-2 SERVICES FOR STUDENT EMPLOYEES**



Purdue University has partnered with ADP to offer online W-2 services beginning with the 2014 tax year.

ADP, Inc. is a trusted and data security-focused provider of HR, payroll, talent, time, tax, and benefits administration, serving hundreds of thousands of organizations over ADP's 65 year history.

*Benefits of registering for online W-2 services include:*

- \*Online access to W-2 form up to 10 business days earlier than mail delivery
- \*Eliminates mail delivery complications, waiting period, and security concerns
  - \*Allows employees to print copies at their discretion
- \*Provides an avenue for former employees to retrieve tax information quickly and easily, without the need to contact University for assistance

**Important note: The deadline to register for paperless W-2 delivery for the 2014 tax year is December 31, 2014.**

Additional information and instructions can be found at [www.purdue.edu/business/payroll/taxes/W-2Services.html](http://www.purdue.edu/business/payroll/taxes/W-2Services.html)

Contact Payroll Services, Tax Department  
[tax@purdue.edu](mailto:tax@purdue.edu) or 765-496-2303

**A REQUIRED RCR WORKSHOP  
– RESEARCH INTEGRITY –  
Tuesday, Jan. 20<sup>th</sup>, 2014, 5:30-7:00 p.m.  
LWSN 1142**

The workshop will be held on **January 20<sup>th</sup>** in LWSN 1142 from **5:30-7:00pm**. If you have not already taken this workshop, this will be a good time to do so. To register for this workshop, or any other workshops offered by the Graduate School, please follow this link:  
[https://ias.itap.purdue.edu/rqs/wgb\\_workshop.disp\\_online\\_w](https://ias.itap.purdue.edu/rqs/wgb_workshop.disp_online_w)

[orkshop](#)

Light refreshments (pizza & drinks) will be provided 30 minutes prior to the workshop

~~~~~

**NORTHWESTERN UNIVERSITY IS RECRUITING FOR
THEIR PHD. PROGRAM**

The Department of Earth and Planetary Sciences at Northwestern is seeking graduate applicants for the incoming class of **Fall 2015**.

Due to an unusually large number of PhD. graduates in the 2014 calendar year, and the addition of new graduate student funding opportunities (e.g., the H. Grant Goodell Fellowship in Sedimentary Geology), they are eager to recruit a robust class of excellent new PhD. students. If prospective students plan to attend AGU, visit their recruiting booth. If not, check their website for details on faculty research interests and current projects.

Lastly, feel free to contact Brad Sageman (brad@earth.northwestern.edu) or Trish Beddows (patricia@earth.northwestern.edu) if you have any questions about their graduate program.

OTHER

PURDUE UNIVERSITY DISCOVERY PARK

Discovery Park and Purdue University's College of Agriculture have partnered to support an upcoming seminar series aimed at highlighting how interdisciplinary collaborations can transform agricultural science and technology.

The seminars will focus on ways collaboration among disciplines in basic and applied research in life and physical sciences will be necessary to yield the kinds of truly transformational advances needed to solve many of the pressing issues of the 21st Century, including global food security. Purdue faculty will highlight technologies which are not traditionally considered agricultural, but which are beginning to make major impacts in agriculture. Each talk will explore future possibilities and the types of interdisciplinary research collaborations and expertise essential to reaching them...

PLEASE MARK YOUR CALENDARS to attend the brown-bag seminars listed below. All of the talks will run **12:00-1:30 p.m.** in room **121** of the Burton Morgan Center for Entrepreneurship in Discovery Park.

Bring a lunch--drinks and cookies will be provided.

Feb. 5: Automation in Agriculture-Robotics in the Real World

Feb. 12: Advanced Sensors in Crop Production and Protection

Feb. 19: Agricultural Applications of Unmanned Aerial Vehicles

Feb. 26: "Big data" in Agriculture

**TENURE---TRACK ASSISTANT PROFESSOR POSITIONS
IN STRUCTURAL GEOLOGY AND CARBONATE
SEDIMENTOLOGY**

The Department of Geology at Kansas State University invites applications for two tenure---track faculty positions at the assistant professor level beginning in **August 2015**.

They seek enthusiastic and versatile geologists able to contribute to our growing Bachelor's and Master's degree programs. The positions require excellence in teaching and advising, professional and scholarly achievements, and a commitment to service to the University. It is expected that the successful candidate for each position will develop and maintain a vigorous, externally funded research program, supervise graduate and undergraduate theses, publish in peer---reviewed journals, and teach at the undergraduate and graduate levels.

Carbonate sedimentology

The successful applicant will ideally carry out research that interfaces with the broad area of petroleum geoscience and engineering and will be able to teach and supervise research students in this area of geoscience. The ability to combine field skills with a broad range of analytical methods in order to quantify geologic processes is strongly desired. The new faculty member will be expected to teach Sedimentary Petrology (and/or related upper level courses e.g., carbonate sedimentology).

Structural Geology/Tectonics/Geomechanics

They are looking for a field---oriented individual whose area(s) of expertise would interface with and complement existing research strengths in the department and teach Structural Geology (and related upper---level courses). We also encourage interactions

with researchers and faculty in other units on campus, including but not limited to Engineering and Geography.

Minimum Qualifications:

- Applicants must possess a doctorate in Geology or related field from an accredited university by **August 31, 2015**
 - Excellent verbal and written communication skills
 - Ability to develop and sustain an active, externally funded research program, and effectively manage research projects and supervise student/staff researchers
- Qualifications to teach graduate and undergraduate courses in the geology curriculum effectively, as described above

Desirable Qualifications:

- Versatility in teaching capabilities
- Ability to establish collaborations beyond the department and college
- Willingness to serve the department, institution, and profession through active participation in committees and professional societies
- Industry experience and contacts

Application Information:

Review of applications will begin **15 December, 2014**, and continue until the position is filled. Applicants must submit: (1) a letter of application that describes their qualifications and background, (2) statements outlining their research plans and teaching philosophy, (3) a curriculum vita, and (4) arrange for three letters of reference to be sent directly from referees to geoposition@ksu.edu.

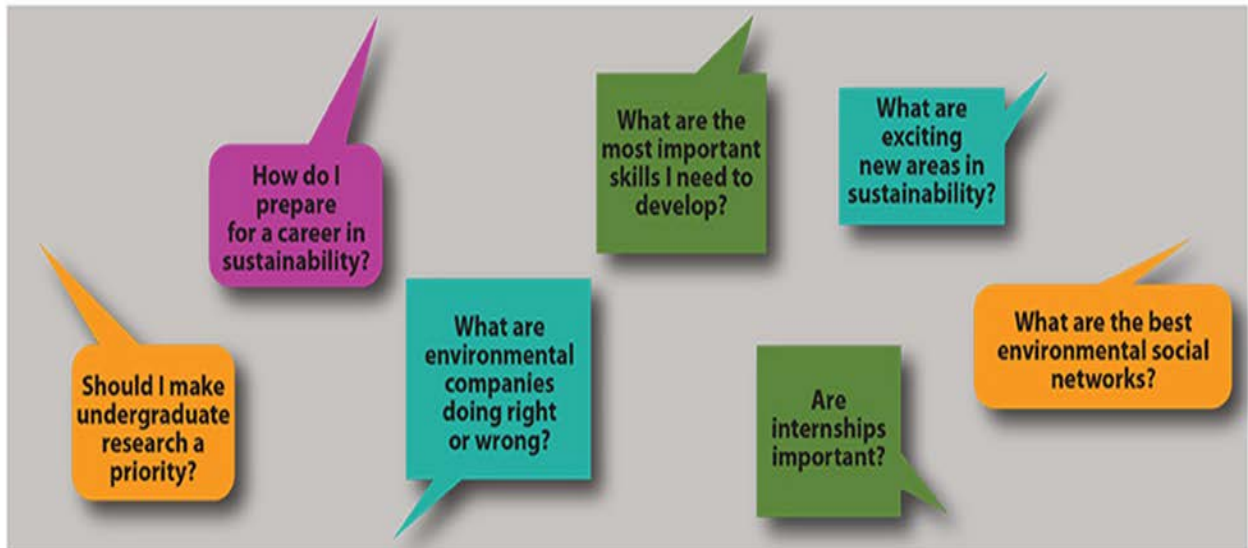
IMPORTANT NOTICE ABOUT THIS NEWSLETTER

This newsletter is used as the primary information source for current and upcoming events, announcements, awards, grant opportunities, and other happenings in our department and around campus. Active links to additional information will be provided as needed. Individual email announcements will no longer be sent unless the content is time-sensitive. We will continue to include our publications, presentations and other recent news items as well. Those using paper copies of the newsletter should go to our newsletter archive on the EAPS website at www.purdue.edu/eas/ and **Click on News** to access active links as needed. Material for inclusion in the newsletter should be submitted to Fallon Seldomridge (fseldomridge@purdue.edu) by **5:00pm on Thursday** of each week for inclusion in the Monday issue.

If it is in the newsletter, we assume you know about it and no other reminders are needed. For answers to common technology questions and the latest updates from the EAPS Technology Support staff, please visit http://www.purdue.edu/eas/info_tech/index.php.

Also, as an additional resource for information about departmental events, seminars, etc., see our departmental calendar at <http://calendar.science.purdue.edu/eas/seminars>.





Conversation with an Environmental Leader Series

SPRING 2015

The Conversation with an Environmental Leader series is an opportunity for undergraduate students to engage in meaningful dialog with a diverse range of civic, corporate, and non-profit environmental leaders in an informal setting over dinner. These leaders will share their personal career journeys and perspectives on environmental leadership and reflect on the kinds of skills and interests careers in environmental-related fields require. These events are a way for students to explore how a wide range of professions focus on solving important environmental challenges locally, nationally, and internationally, in the public and private sectors. Each event is structured as an informal conversation between an environmental leader and a small group of students, including dinner. Space is limited so registration is required to participate. Register for Conversation with an Environmental Leader.

FEBRUARY 5, 2015 | Jesse Kharbanda, Executive Director, Hoosier Environmental Council

MARCH 5, 2015 | Melody Park, Director of the Indianapolis Office of Sustainability

APRIL 9, 2015 | Dr. Perre Burns, Principal, Burns Environmental Engineering, Inc.

[CLICK HERE TO REGISTER](#)

Tenure-Track Assistant Professor Positions in Structural Geology and Carbonate Sedimentology

The Department of Geology at Kansas State University invites applications for two tenure-track faculty positions at the assistant professor level beginning in August 2015.

We seek enthusiastic and versatile geologists able to contribute to our growing Bachelor's and Master's degree programs. The positions require excellence in teaching and advising, professional and scholarly achievements, and a commitment to service to the University. It is expected that the successful candidate for each position will develop and maintain a vigorous, externally funded research program, supervise graduate and undergraduate theses, publish in peer-reviewed journals, and teach at the undergraduate and graduate levels.

Carbonate sedimentology. The successful applicant will ideally carry out research that interfaces with the broad area of petroleum geoscience and engineering and will be able to teach and supervise research students in this area of geoscience. The ability to combine field skills with a broad range of analytical methods in order to quantify geologic processes is strongly desired. The new faculty member will be expected to teach Sedimentary Petrology (and/or related upper level courses e.g., carbonate sedimentology).

Structural Geology/Tectonics/Geomechanics. We are looking for a field-oriented individual whose area(s) of expertise would interface with and complement existing research strengths in the department and teach Structural Geology (and related upper-level courses). We also encourage interactions with researchers and faculty in other units on campus, including but not limited to Engineering and Geography.

Minimum Qualifications:

- Applicants must possess a doctorate in Geology or related field from an accredited university by August 31, 2015
- Excellent verbal and written communication skills
- Ability to develop and sustain an active, externally funded research program, and effectively manage research projects and supervise student/staff researchers
- Qualifications to teach graduate and undergraduate courses in the geology curriculum effectively, as described above

Desirable Qualifications:

- Versatility in teaching capabilities
- Ability to establish collaborations beyond the department and college
- Willingness to serve the department, institution, and profession through active participation in committees and professional societies
- Industry experience and contacts

Application Information:

Review of applications will begin 15 December, 2014, and continue until the position is filled. Applicants must submit: (1) a letter of application that describes their qualifications and background, (2) statements outlining their research plans and teaching philosophy, (3) a curriculum vita, and (4) arrange for three letters of reference to be sent directly from referees to geoposition@ksu.edu. Questions

regarding these positions should be directed to the Search Committee Chairs, Dr Matthew Totten (mtotten@ksu.edu) for Sedimentology and Dr Matthew Brueseke (brueseke@ksu.edu) for Structural Geology, or contact the Head of Department, Prof Pamela Kempton (pkempton@ksu.edu). Full consideration will be given to applications received by December 1, 2014; however, the positions will remain open until filled. Additional information about the Department may be found at www.ksu.edu/geology. Salary will be commensurate with qualifications and experience.

College Information:

The programs in the College of Arts and Sciences are central to K-State's historic and present missions. The College contains more than 20 departments and offers a number of special programs and secondary majors. With more than 7,000 students, it attracts the largest enrollment of any K-State college. It also offers approximately 85 percent of all freshman courses and 65 percent of all credits taught. The University is aggressively implementing a plan to be nationally recognized as a top 50 public research university by 2025. K-State is a Land Grant University and has been ranked among the top state and private institutions of higher education in Rhodes, Marshall, Truman, Goldwater, and Udall scholars since 1986. Current enrollment is over 24,000 students.

Kansas State University is a recipient of a National Science Foundation ADVANCE Institutional Transformation Award to increase the participation of women in academic science and engineering careers. K-State is building a culturally diverse faculty and strongly encourages applications from women and minority candidates. Kansas State University is an EOE of individuals with disabilities and protected veterans. Kansas State University actively seeks diversity among its employees. Background check required.

Department Information:

The Department of Geology (<http://www.ksu.edu/geology>) currently includes 10 tenure-track/tenured faculty, 30 M.S. students, and over 70 undergraduate majors. Existing research strengths include: petroleum geology, geophysics, sedimentary geology, groundwater and surface-water hydrology, geomicrobiology, isotope geochemistry, geochronology, surficial processes, and igneous petrology.

We currently occupy an attractive older building and continue to implement an ongoing program of renovation to modernize laboratory and classroom space. However, the university is also actively pursuing funding for a new Geosciences building (<http://www.k-state.edu/geology/>) that will provide the space our department needs to continue to grow. Analytical and computational resources exist within the department and across campus. See for example, <http://www.ksu.edu/directories/research-facilities.html>. We have a supportive alumni group that helps to provide research and travel funds for our students. Opportunities for collaboration within the university exist with faculty members in the departments of Geology, Biochemistry, Geography, Biology, Agronomy, and Environmental Engineering.